

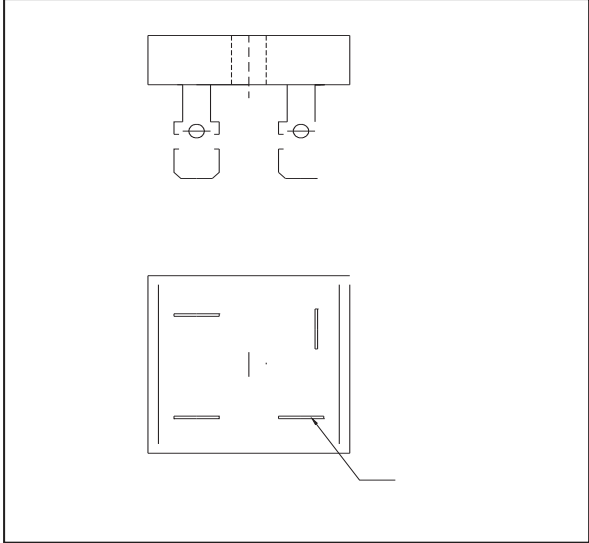
KBPC SILICON BRIDGE RECTIFIERV
REVERSEVOLTAGE:50 --- 1000V CURRENT: 35.0A

FEATURES

Üæcì} *Ác[ÁF€€XÁÚÜX
 Û~!*^Á[Ç^![[æáÁæcá}*Ác[ÁI€€E{]^!^•Á] ^æ\ÁÁÚá^æÁ- [!Á] !á)c^áÁ&áí&~ácÁà[æ!á
 Û^!|æà|Á| [, Á&[•cÁ[] •c!~&cá[] Á~cá|á:á} *Á { [|á^áÁÁÁ]|æ•cá&Ác^&@} á~^Á!^•~|c•
 á}Áá}^ç] ^} •íç^Á} ! [á~&cÁÁ^æáÁ• [|á^!æà|Á] ^!Á T0ŠÉÜVÖE€GÁ { ^c@ [áÁG€ì
 Pá* @Á&æ•^Ááá^!^&c!í&Á , ác@Á•cæ} áá} *Áç[|cæ*^Á[-ÁG í€€ÁXÜTÜ
 Pá* @Á^~í&á^} &^

A97<5B=75@'85H5

Ôæ•^Á•c^|ÁÁSÓUÖÁ]|æ•cá&Á { [|á^á
 M[~}cá} *Ác@!~Á@ [|Á- [!ÁÁÁ!Á•&í^ , Á { [~}cá} *



MAXIMUM RATINGS AND CHARACTERISTICS

@ 25°C Ambient Temperature (unless otherwise noted)Single phase,half wave,60 Hz,resistive or inductive load.
 For capacitive load,derate by 20%.

										V
										V
										V
										A
										A
										V
										A
										mA
										°C
										°C

