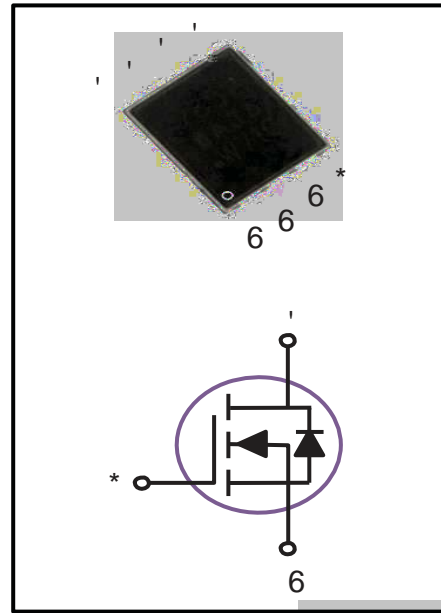


9 1 & KDQQHO 026) (786 % :

33\$. ; 3LQ & RQILJXUDWLRQ

% 9 '66	5 '6 2 1	, '
9	P:	\$

) HDWXUHV
z 65V,95A, RDS(ON) P # 9 * 6= 10V
z Improved dv/dt capability
z Fast switching
z Green Device Available
\$ SSOLF DWLRQV
z Networking
z Load Switch
z LED applications



0\$; , 080 5\$7, 1\*6 \$1' & +\$5\$&7(5,67, &6

# f & \$PELHQW 7HPSHUDWXUH XQOHVV RWKHUZLVH QRWHG

3DUDPHWHU	6\PERO	5DWLQJ	8QLWV
'UDLQ 6RXUFH 9ROWDJH	9 <sub>6</sub>		9
*DWH 6RXUFH 9ROWDJH	9 <sub>6</sub>	"	9
'UDLQ & XUHQW ±&RQWLQXR XV 7	'		\$
'UDLQ & XUHQW ±&RQWLQXR XV 7	'		\$
'UDLQ & XUHQW ± 3XOVHG	;0		\$
6LQJOH 3XOVH \$YDODQFKH (QHUV\	(\$6		P-
6LQJOH 3XOVH \$YDODQFKH & XUHQW	, \$6		\$
3RZHU 'LVVLSDWLRQ 7	3		:
3RZHU 'LVVLSDWLRQ ±u'HUDWH DERYH	3		: u
6WRUDJH 7HPSHUDWXUH 5DQJH	7 <sub>67</sub> *	WR	u

2SHUDWLQJ -XQFWLRQ 7HPSHUDWXUH 5DQJH v WRW



9 1 & KDQQHO 026) (786 % :

026)(7 (/(&75,&\$/ &+\$5\$&7(5,67,&X OHVV RWKHUZLVH VSHFLILHG

3DUDPHWHU	6\PERC	&RQGLWLRQV	0LQ	7\S	0D[	8QLW
'UDLQ 6RXUFH %UHDNGR	ZQ %R6WD	9H 9 ' , X\$				9
'UDLQ 6RXUFH /HDNDJH &XUUHQW	XUUHQW	9.6 9 .0 9 .7 u				X\$
'UDLQ 6RXUFH /HDNDJH &XUUHQW	XUUHQW	9.6 9 .0 9 .7 u				X\$
*DWH 6RXUFH /HDNDJH &XUUHQW	XUUHQW	9.6 " 9 .0 9			"	Q\$

2Q & KDUDFWHULVWLFV

6WDWLF 'UDLQ 2QR XHVLVWDQFH	9.6 5 9 ' , \$					P:
	9.6 9 ' , \$					P:
*DWH 7KUHVKROG 9ROWDJH 9.6 WK	9.6 9.6 ' , X\$					9
)RUZDUG 7UDQVFRQGXFWDQFH	9.6 9 ' , \$					6

'\QDPLF DQG VZLWFKLQJ & KDUDFWHULVWLFV

7RWDQ *DWH &KDUJH	4J					
*DWH 6RXUFH &KDUJH	4JV	9.6 9 .0 9 ' , \$				Q&
*DWH 'UDLQ &KDUJH	4JG					
7XUQ 2Q 'HOD\7LPH	7G RQ					
5LVH 7LPH	7U	9.6 9 .0 9				QV
7XUQ 2II 'HOD\7LPH	7G RII	5. : ; \$				
)DOO 7LPH	7I					
,QSW &DSDFLWDQFH	&LVV					
2XWSXW &DSDFLWDQFH	&RVV	9.6 9 .0 9 ) 0+]				S)
5HYHUVH 7UDQVIHU &DSDFLWDQFH	&LVV					
*DWH UHVLVWDQFH	5J	9.6 9 .0 9 ) 0+]				:

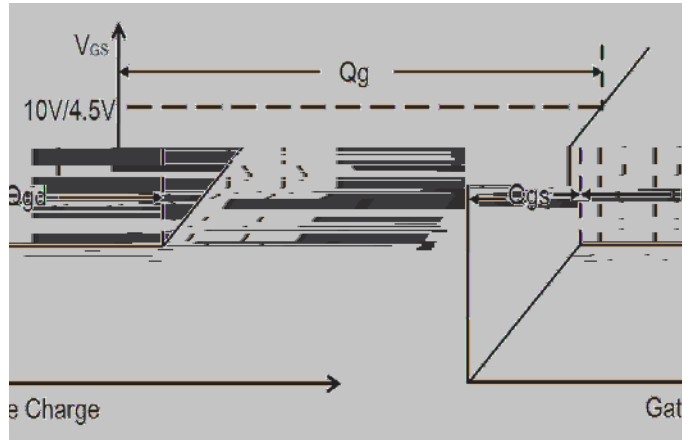
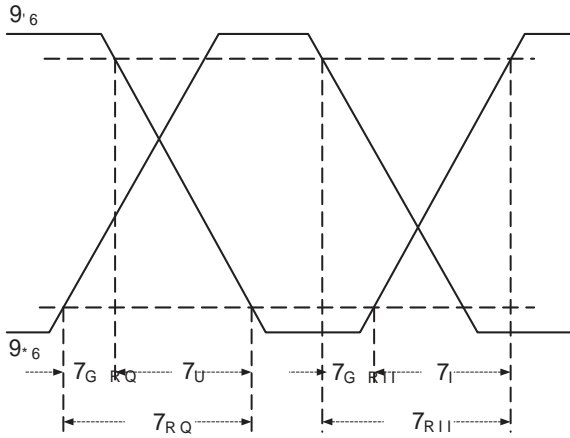
'UDLQ 6RXUFH 'LRGH & KDUDFWHULVWLFV DQG 0D[LPXP 5DWLQJV

3DUDPHWHU	6\PERC	&RQGLWLRQV	0LQ	7\S	0D[	8QLW
&RQLQRXV 6RXUFH &XUUHQW	XUUHQW	9. 9. 9 )RUFH &XUUHQW				\$
3XOVHG 6RXUFH &XUUHQW	XUUHQW .60					\$
'LRGH )RUZDUG 9ROWDJH	9.6	9.6 9 .6 , \$ .7 u				9
5HYHUVH 5HFRYHU\7LPH	WU	9.5 9 .6 , \$				QV
5HYHUVH 5HFRYHU\&KDUJH	4UU	GL GW \$ -V 7				Q&

1RWH

5HSHWLWLYH 5DWLQJ 3XOVHG ZLGMKPSHFLDWHXGUB\ PD[LPXP MXQFWLRQ  
 9. 9 9. 9 / P.6, \$ 5 : 6WUWLQJ 7  
 7KH GDWD WHVWHG E\ SXOVHG SXOVHFXZLGMK  
 (VVHQWDOO\ LQGHSHQGHQW RI RSHUDWLQJ WHPSHUDWXUH





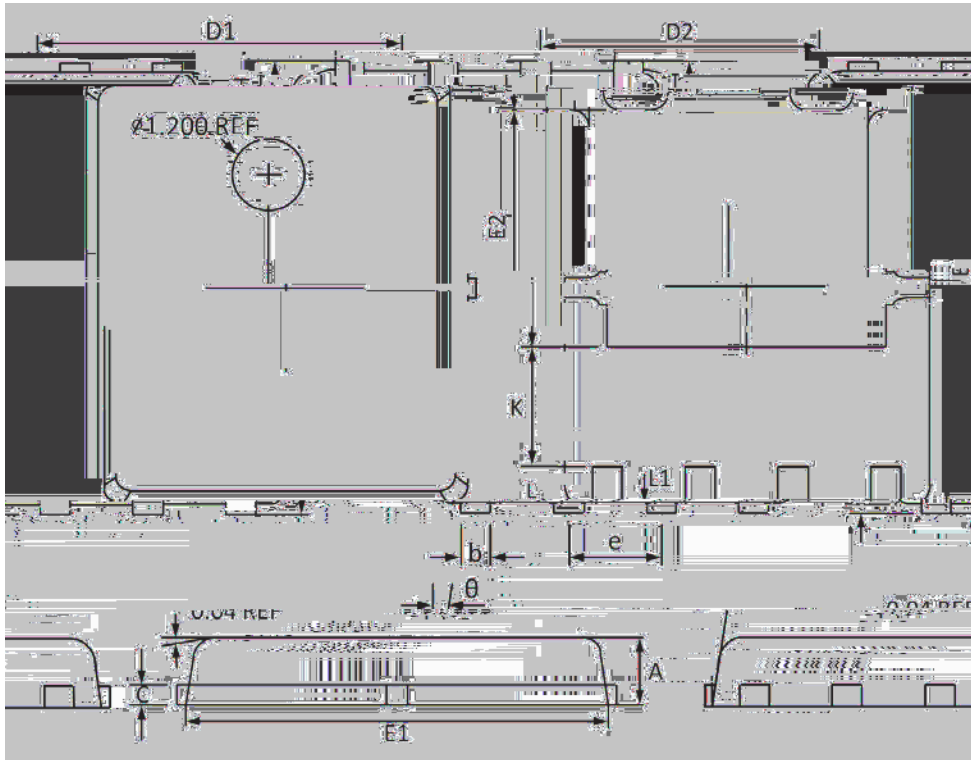
)LJ 6ZLWFKLQJ 7LPH :DYHIRUP

)LJ \*DWH &KDUJH :DYHIRUP



9 1 & KDQQHO 026) (786 % :

33\$. ; 3\$&.\$\*( ,1)250\$7,21



6\PER	'LPHQVLRQV ,Q 0	LOOLPHWHUV	'LPHQVLRQV
	0\$;	0,1	0\$;
\$			
E			
&			
'			
'			
(			
(			
(			
H		% 6	% 6 &
+			
.			
/			
/			
	<i>f</i>	<i>f</i>	<i>f</i>