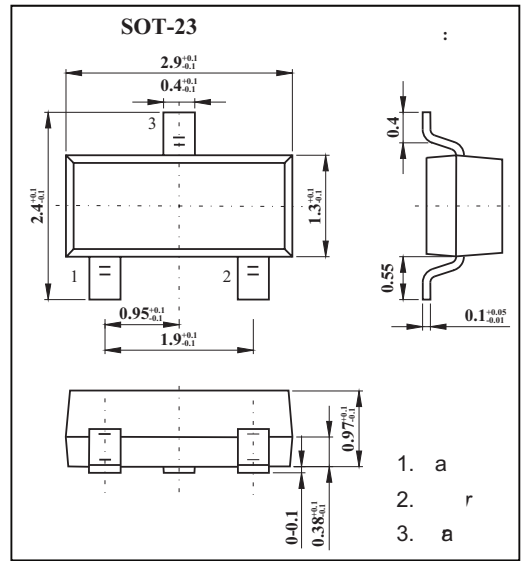


F

Ôæ•^Á•c^|KÛUVËGH { [|â^âÁ] |æ•câ&
 T [~ } câ } *Á] [•âcâ [} Kæ } ^



Ó GÍ»ÔŒ { àâ^ } c V^ {] ^!æc~!^ ç~ } | ^•• [c@^! , â•^ } [c^âD

			±	
Ô [} câ } ~ [~ •ÁÖ!æâ } ÁÔ~!!^ } cÁçVRMFí€Á°C	VCEM Gí°C			
Ú~ •^âÁÖ!æâ } ÁÔ~!!^ } cÁ	VCEM İ€°C			
Ú [, ^!ÁÖâ••â] æcâ [} Á	VCEM Gí°C			
	VCEM İ€°C			
				°C
				°C

V@^! { æ|ÁÜ^•â•cæ } &^ÁÜæcâ } *•ÁVæÁMÁGÍ°C

				C

≡

aa r				a
a - r ra	a	0	-10μ	-12
a r a			-250	-0.45
a - aa		0	±8	±100
		-12	0	-1
		-12	0	55